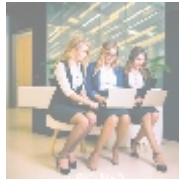
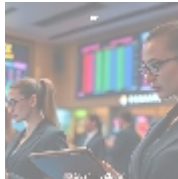




Custom Component Development Services for Your Business



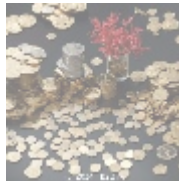
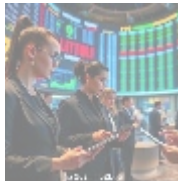
Understanding Custom Component Development

Custom Component Development refers to the meticulous process of creating tailored software components that enhance the functionality and performance of content management systems like Joomla. Businesses often face unique challenges that off-the-shelf solutions cannot adequately address. Therefore, developing bespoke components allows organizations to optimize their operations and elevate customer experiences through personalized interfaces and functionalities. With the ever-changing demands of technology and user expectations, leveraging custom components is key to distinguishing your digital presence in an increasingly competitive landscape. This development process evaluates business challenges, captures user requirements, and translates them into effective software solutions.

Utilizing Custom Component Development brings various advantages:

- **Enhanced Functionality:** Custom components can be crafted to serve specific business needs, incorporating advanced features that are not available in standard software solutions. These features can address complex functionality such as unique data handling, user permissions, or specialized workflows.
- **Improved User Experience:** Tailored components designed with specific target audiences in mind significantly enhance user engagement and satisfaction. A user-friendly interface built with the target audience in mind encourages higher interaction rates and promotes customer loyalty.
- **Scalability:** Custom components are designed with growth in mind, allowing businesses to easily adapt to increased operational demands. As organizations expand, their digital infrastructure can scale without a complete overhaul, ensuring continuity and stability.
- **Competitive Edge:** By offering unique functionalities and services derived from custom components, businesses can distinctly position themselves in the market. This can allow them to capitalize on market gaps, providing solutions that are better fitted to their target audience's needs.
- **Integration Capabilities:** Tailored components can be seamlessly integrated with existing systems, ensuring a coherent and efficient operational infrastructure. This compatibility promotes data consistency and streamlines business processes.

- **Long-term Cost Efficiency:** Although initial development costs may be higher, the adaptability and longevity of custom components can provide significant savings over time. By reducing dependency on third-party vendors and unnecessary licensing fees, organizations can invest more strategically in their growth.



Perspectives on Custom Component Development

Understanding the significance of Custom Component Development Services requires a multifaceted analysis through various perspectives. By examining these different viewpoints, businesses can grasp the comprehensive value of investing in these services.

Economic Perspective

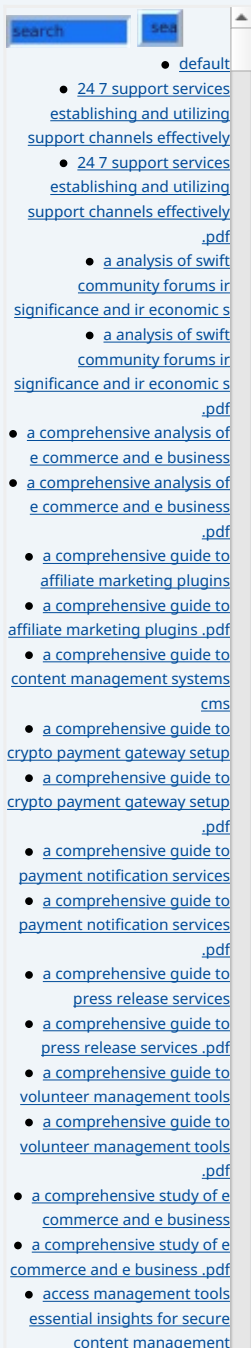
On an economic level, investing in custom component development can lead to substantial long-term benefits. Tailored solutions enable businesses to streamline processes, effectively reducing operational overhead and maximizing efficiency. This can ultimately translate into improved profit margins, as investments are aligned with identified business needs rather than generic solutions. Moreover, with an increasing reliance on technology in daily operations, having bespoke solutions reduces the reliance on third-party vendors, mitigating risks associated with changing external circumstances. Businesses can leverage their components to introduce new revenue streams and explore innovative market opportunities, thus enhancing their economic robustness.

Technological Perspective

From a technological standpoint, the landscape of component development is rapidly evolving. Utilizing modern development frameworks (such as React, Angular, or Vue.js) and coding languages (such as PHP, JavaScript, or Python) allows for the creation of robust, innovative, and secure components that meet the highest standards of performance and user experience. By integrating the latest technologies such as artificial intelligence or machine learning, businesses can enhance their components further, making them more intuitive and responsive to user needs. Additionally, the use of scalable architectures supports easy updates and modifications, keeping the component relevant in a fast-paced digital environment. Technological advancements ensure that custom components remain adaptable, allowing businesses to pivot and innovate as needed quickly.

Social Perspective

Considering the social aspect, custom components can be designed with inclusivity and accessibility in mind, thus reflecting the diverse needs of all user demographics. Custom solutions can incorporate features that accommodate users with disabilities, ensuring that all audiences can interact with the business effectively. Addressing cultural and societal factors not only improves user satisfaction but also broadens the reach of the business, allowing it to cater to a wider audience. This is particularly important in today's globalized world, where online services are accessed by users from varied backgrounds and abilities. Additionally, fostering a strong community around these solutions can enhance user engagement and encourage collaborative innovation.



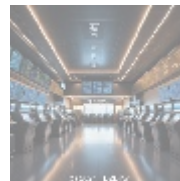
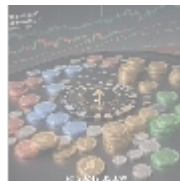
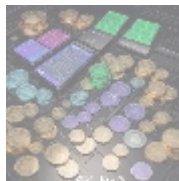
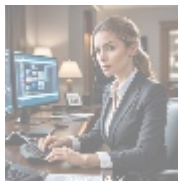
- [access management tools essential insights for secure content management .pdf](#)
- [accessibility improvement tools for cms powered sites](#)
- [accessibility improvement tools for cms powered sites .pdf](#)
- [account setup services for 2checkout enhance your e commerce experience](#)
 - [advantage of best cloud accounting for ecommerce](#)
 - [advantage of best cloud accounting for ecommerce .pdf](#)
- [advertising for payment acceptance](#)
- [advertising for payment acceptance .pdf](#)
 - [advisory services for mergers and acquisitions](#)
 - [advisory services for mergers and acquisitions .pdf](#)
- [adyen for marketplaces setup](#)
- [adyen for marketplaces setup .pdf](#)
- [adyen payment integration services](#)
- [adyen payment integration services .pdf](#)
 - [adyen the future of payment processing](#)
 - [adyen the future of payment processing .pdf](#)
- [affiliate marketing setup for klarna](#)
- [affiliate marketing setup for](#)

Legal Perspective

The legal implications of component development cannot be overstated. Ensuring that custom solutions are compliant with data protection regulations (such as GDPR, CCPA, etc.) and intellectual property laws is crucial for safeguarding businesses against potential legal disputes. A custom component should also be designed with cybersecurity in mind, protecting both the business and its users from breaches that can lead to significant financial and reputational damage. Regular updates and audits of the component help maintain compliance and secure user data, reinforcing trust with customers.

Environmental Perspective

In the current landscape, sustainability is a growing concern for many businesses. Custom components can be developed utilizing eco-friendly practices such as efficient coding solutions and sustainable hosting options. By minimizing server loads and optimizing resource usage, businesses can significantly lower their carbon footprint. Such considerations not only reduce operational environmental impacts but also enhance a company's reputation as a socially responsible organization, appealing to consumers who prioritize sustainability in their purchasing decisions. Implementing green IT strategies within component development can also inspire broader organizational behaviors towards environmental stewardship.



The Development Process: From Concept to Implementation

Defining the Needs

The development of a custom component begins with a comprehensive analysis of the client's business requirements. This step ensures that the final product aligns perfectly with the strategic goals of the organization. Engaging stakeholders, including users and management, in this phase is essential, as it offers insights into their needs, priorities, and pain points. Through methods such as interviews, surveys, or workshops, developers can gather detailed user stories that inform the overall design and functionality of the component.

Design and Prototyping

Once the necessities are established, the next phase is to create a design prototype. This important step allows stakeholders to visualize the proposed component, providing a clearer understanding of its functionalities and layout. Utilizing design tools like wireframes and mock-ups helps facilitate discussions, providing a tangible representation of the end product. Feedback from this stage is integral; it ensures that the final product aligns with user expectations and addresses any concerns before full-scale development. Iterative design and prototyping can lead to a more refined end product, reducing costly changes later in the process.

Development and Testing

- [Legal Terms](#)
- [Main Site](#)

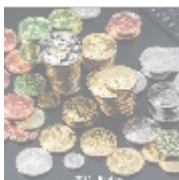
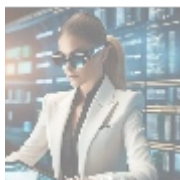
- Why buying here:

1. Outstanding Pros ready to help.
2. Pay Crypto for Fiat-only Brands.
3. Access Top Tools avoiding Sanctions.
4. You can buy in total privacy
5. We manage all legalities for you.

During the coding phase, best practices must be adhered to in order to ensure that the component is scalable, maintainable, and secure. This process involves writing clean, modular code, implementing coding standards, and utilizing version control systems for collaboration among developers. Additionally, thorough documentation is crucial for ongoing maintenance and future updates. Following the coding process, extensive testing is conducted to identify and resolve any bugs or issues that may arise, ensuring the product performs reliably across various scenarios and user interactions. User Acceptance Testing (UAT) further ensures that the component meets the expectations of its users.

Deployment and Support

Once testing is complete and any necessary revisions are made, the component is ready for deployment in the production environment. This transition requires careful planning to ensure minimal disruption to existing operations. A launch strategy is created to manage this process effectively, including rollback plans in case of unforeseen issues. After deployment, ongoing support is crucial to resolve any unforeseen issues that may arise and to implement future updates in response to evolving user needs and technological advances. Establishing a dedicated support team to handle inquiries and provide technical assistance can greatly enhance user satisfaction.



Conclusion: Unlock Your Business Potential with Custom Components

In conclusion, Custom Component Development represents a critical component for businesses seeking to enhance their operational efficiency and customer engagement. By leveraging tailored solutions, organizations not only optimize their functionalities but also differentiate themselves in a competitive marketplace. Addressing unique challenges through custom development allows businesses to elevate their offerings and adapt over time, paving the way for sustainable growth and success. In a world where digital transformation is paramount, investing in customized solutions becomes not just an option, but a strategic necessity.

With the right approach, custom components can truly unlock a business's full potential, driving innovation and setting a foundation for future endeavors. Businesses that embrace this approach are not merely surviving but thriving, positioning themselves as leaders in their respective industries.

Unlock Your Custom Component Development Today!

Are you ready to elevate your business with our Custom Component Development Services? Our offering starts at an affordable price of \$800. To get started, please proceed to our [Checkout Gateway](#) and utilize our secure Payment Processor to pay the indicated amount of \$800 in favor of our company. Once your payment is completed, reach out to us via email, phone, or contact form with your payment receipt and details to arrange your Custom Component Development Service. Thank you for considering our services; we look forward to collaborating with you!

© 2025+ b2b.rw . All rights reserved.

