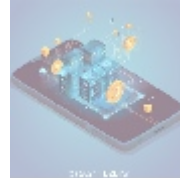
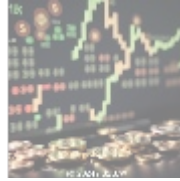




## Understanding IDE Subscriptions: Importance and Benefits

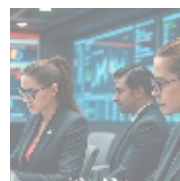
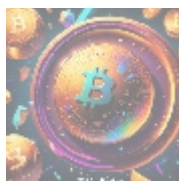


### General Overview of IDE Subscriptions

Integrated Development Environments (IDEs) provide developers with all the necessary tools to write, test, and debug their code in a cohesive environment. IDEs such as JetBrains IntelliJ IDEA and Visual Studio from Microsoft are equipped with strong features like code completion, syntax highlighting, advanced debugging options, version control integration, and deployment tools. The advent of IDE subscriptions represents a significant shift in how developers engage with these powerful tools.

Traditionally, purchasing an IDE meant incurring a sizable upfront cost for a perpetual license, which could be a barrier for smaller teams and independent developers. Now, with subscription models, users can spread out this financial commitment into manageable monthly or yearly fees. This flexibility encourages a broader range of developers to adopt powerful IDEs, enabling them to utilize cutting-edge technology that would otherwise be out of reach. Additionally, the model promotes continuous learning and adaptation as the IDE evolves alongside the developers needs through regular updates and enhancements.

The operational model of subscriptions allows developers to access advanced features without the worry of updating software manually. Furthermore, IDE subscriptions enhance collaboration by enabling cloud-based workspaces, fostering immediate sharing of resources and ideas among developers worldwide. By leveraging these platforms, developers can stay agile in an increasingly fast-paced and evolving tech landscape.



### Intersecting Perspectives on IDE Subscriptions

The multifaceted nature of IDE subscriptions warrants analysis from multiple perspectives, allowing organizations and developers alike to understand their broader implications, including economic viability, technological advancements,

legal considerations, and social impact.

## Economic Perspective

From an economic viewpoint, the introduction of subscription-based IDEs signifies a radical rethinking of cost structures in software development. The bypassing of initial large financial outlays can significantly lower the barrier to entry for small startups and individual developers, fostering a more inclusive development environment. For example, a small development team working on a groundbreaking application may opt for a subscription-based IDE service, allowing them the resources required to innovate without being financially shackled by upfront costs. This model encourages continuous investment in personal and professional development, as developers can frequently upgrade and adapt their tools without interruptions to their workflow.

Moreover, the subscription model provides business owners with the financial predictability of operating budgets, allowing for more strategic resource allocation. Teams can project expenses over time, allowing for better overall financial planning and analysis of ROI on software investments. However, they must also be mindful of total subscription costs as their teams expand, ensuring that they avoid overspending as needs grow. By evaluating user needs carefully, organizations can strike the right balance between tool effectiveness and cost efficiency.

## Technological Perspective

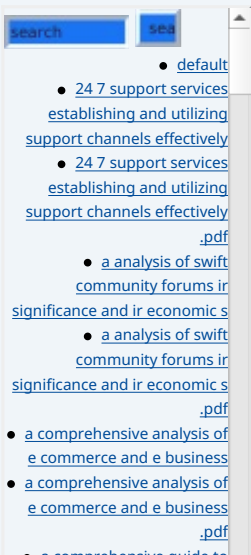
When examining the technological implications of IDE subscriptions, one must consider the rapid pace of software development and how IDEs must adapt accordingly. The continuous stream of updates and new features provided to subscribers keeps them up-to-date with industry trends and best practices. Many IDEs now utilize advanced features such as AI-assisted coding and analytics, significantly empowering developers to minimize coding errors and improve their output quality. For example, JetBrains offers a feature called "IntelliJ" that uses machine learning to provide context-sensitive code suggestions based on the user's prior code and patterns.

Additionally, the movement towards cloud-based IDEs is reshaping how developers collaborate. With teams now working remotely, tools like Visual Studio Code can operate entirely in the cloud, enabling simultaneous editing and sharing of project files in real-time. This level of integration fosters a culture of collaboration that was once challenging with traditional desktop IDEs. Developers can use these tools across platforms and devices, making development more flexible, responsive, and efficient. However, to capitalize on these advancements, developers also need to ensure that they have stable internet connections and reliable cloud service providers to avoid workflow interruptions.

## Legal Perspective

Legal concerns surrounding IDE subscriptions primarily relate to licensing agreements, software usage rights, and data privacy. Each subscription includes a license agreement that stipulates how users can utilize the software. These agreements can involve nuances concerning intellectual property, especially in cases where third-party libraries or APIs are integrated into projects. For instance, organizations using cloud-based IDEs must navigate complex legalities regarding data storage, data use rights, and regulatory compliance based on the nature of their development projects.

This becomes particularly salient in industries subject to stringent regulations, such as finance or healthcare, where maintaining compliance with laws like HIPAA



or GDPR is critical. Understanding these legal complexities is essential for organizations to avoid potential legal ramifications from improper usage or data handling. To that effect, companies must ensure that their teams are educated about the legal obligations tied to using IDE subscriptions and are equipped to conform to relevant compliance standards.

## Social Perspective

The social implications of IDE subscriptions are profound, particularly when considering diversity and accessibility in the tech sector. By lowering entry barriers, IDE subscriptions make powerful development tools accessible to a more diverse array of developers, including those from underrepresented communities. For example, educational institutes often leverage IDE subscriptions for classroom purposes, enabling students from varying backgrounds to access the same set of professional tools that industry veterans use. This democratization of access creates opportunities for aspiring developers and may lead to a richer and more varied talent pool in the tech industry.

However, some critiques of the subscription model suggest that it may inadvertently create an exclusive culture where only those who can afford ongoing fees maintain access to essential development tools. The challenge lies in ensuring that aspiring developers, regardless of their resources or backgrounds, retain opportunities for professional growth and development through affordable access to IDEs. Addressing this discrepancy is key to fostering a truly inclusive developer community.

## Environmental Perspective

Considering the environmental implications of IDE subscriptions unveils an intriguing dimension in the maturation of software development practices. With many IDEs shifting to cloud-based models, there is potential for improved energy efficiency, as cloud providers often leverage advanced optimization technologies to distribute workloads across their servers. This approach diminishes the need for each development team to operate extensive, energy-consuming local infrastructure, thus decreasing overall carbon footprints. Furthermore, cloud providers frequently commit to using renewable energy sources, heightening the environmental advantages associated with using these models.

However, environmental sustainability will increasingly rely on the continuous improvement of cloud service providers and the adoption of greener practices. All stakeholders in the software development ecosystem must acknowledge their role in promoting sustainable practices and strive toward effective environmental management in their operations.



## The Importance of IDE Subscriptions in Modern Software Development

As software development continues to evolve, the importance of Integrated Development Environments (IDEs) amplifies. IDE subscriptions present an opportunity for developers to enhance their productivity, streamline their workflows, and optimize collaboration. By utilizing advanced IDEs like JetBrains and Visual Studio, developers tap into essential features catering to their diverse

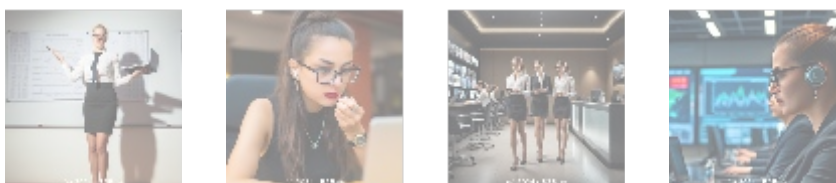
- [a comprehensive guide to affiliate marketing plugins](#)
- [a comprehensive guide to affiliate marketing plugins .pdf](#)
- [a comprehensive guide to content management systems cms](#)
- [a comprehensive guide to crypto payment gateway setup](#)
- [a comprehensive guide to crypto payment gateway setup .pdf](#)
- [a comprehensive guide to payment notification services](#)
- [a comprehensive guide to payment notification services .pdf](#)
- [a comprehensive guide to press release services](#)
- [a comprehensive guide to press release services .pdf](#)
- [a comprehensive guide to volunteer management tools](#)
- [a comprehensive guide to volunteer management tools .pdf](#)
- [a comprehensive study of e commerce and e business](#)
- [a comprehensive study of e commerce and e business .pdf](#)
- [access management tools essential insights for secure content management](#)
- [access management tools essential insights for secure content management .pdf](#)
- [accessibility improvement tools for cms powered sites](#)
- [accessibility improvement tools for cms powered sites .pdf](#)
- [account setup services for 2checkout enhance your e commerce experience](#)
- [advantage of best cloud accounting for ecommerce](#)
- [advantage of best cloud accounting for ecommerce .pdf](#)
- [advertising for payment acceptance](#)
- [advertising for payment acceptance .pdf](#)
- [advisory services for mergers and acquisitions](#)
- [advisory services for mergers and acquisitions .pdf](#)
- [adyen for marketplaces setup](#)
- [adyen for marketplaces setup .pdf](#)
- [adyen payment integration services](#)
- [adyen payment integration services .pdf](#)
- [adyen the future of payment processing](#)
- [adyen the future of payment processing .pdf](#)
- [affiliate marketing setup for klarna](#)
- [affiliate marketing setup for klarna .pdf](#)
- [affiliate program payment solutions](#)
- [affiliate program payment solutions .pdf](#)
- [ai driven real time fraud detection in ecommerce](#)
- [ai driven real time fraud detection in ecommerce .pdf](#)
- [ai integration for fraud detection ecommerce](#)
- [ai integration for fraud detection ecommerce .pdf](#)
- [amazon pay integration services](#)
- [amazon pay integration services .pdf](#)
- [amazon nav revolutionizing](#)

needs across various programming languages and frameworks.

Some of the significant benefits IDE subscriptions provide include:

- **Continuous Updates:** Subscribers automatically receive the most recent software updates, ensuring access to the latest features, improvements, and security patches. This mitigates the risk of operating with outdated tools, which could lead to inefficiency and vulnerabilities.
- **Enhanced Collaboration:** Many modern IDE subscriptions feature cloud-based integrations that enable teams to collaborate seamlessly on projects, share code snippets, and conduct meetings and code reviews in real-time. This level of collaboration is instrumental in minimizing miscommunication and fostering solid team dynamics.
- **Cost Efficiency:** By opting for a subscription model, smaller development teams or freelancers can manage their expenses strategically. Avoiding significant upfront costs by opting for a subscription model allows teams to focus on their core competency writing code rather than worrying about long-term software commitments.
- **Comprehensive Technical Support:** Many IDE subscriptions include access to dedicated technical support and extensive documentation, helping developers troubleshoot effectively and resolve issues more promptly. This support can prevent project delays and alleviate stress during critical development periods.
- **Access to Extensive Libraries and Resources:** IDE subscriptions often provide access to a wide array of plugins and extensions, enabling further customization of development environments while facilitating integration with third-party libraries and frameworks. Developers can leverage these tools to increase their efficiency in problem-solving and developing innovative solutions.

For instance, a software team utilizing JetBrains IDEs can integrate with version control systems, monitor code quality in real-time, and deploy applications directly, all within a single platform. This not only reduces overhead labor but also reinforces best practices around coding standards and deployments.



## Critical Evaluation of IDE Subscription Models

### Cost-Effectiveness Analysis

To truly understand the value of IDE subscriptions, organizations should conduct a thorough cost-benefit analysis that weighs the recurring costs against potential productivity gains. Although subscriptions may seem more expensive in the short term, over time, they can lead to reduced development cycles, faster time-to-market, and ultimately increased revenue streams. For example, if a subscription-based IDE allows developers to cut project timelines by 20%, this efficiency can yield a substantial competitive advantage while enhancing customer satisfaction. These benefits ideally translate into higher profitability and better market positioning.

### Adaptability to Business Needs

The flexibility inherent in IDE subscriptions allows organizations to scale

[amazon pay revolutionizing e commerce transactions .pdf](#)

[amazon pay revolutionizing e commerce transactions .pdf](#)

[aml kyc regulations .pdf](#)

[aml kyc regulations .pdf](#)

[an exploration of ebooks in](#)

[Legal Terms](#)

[Main Site](#)

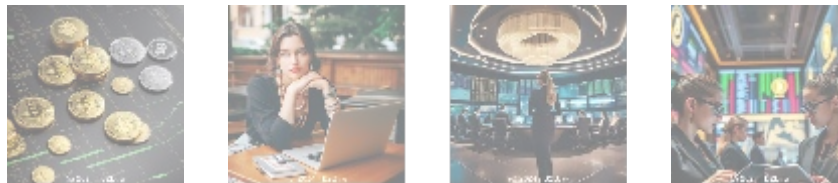
Why buying here:

1. Outstanding Pros ready to help.
2. Pay Crypto for Fiat-only Brands.
3. Access Top Tools avoiding Sanctions.
4. You can buy in total privacy
5. We manage all legalities for you.

development resources to meet fluctuating project demands. As agile methodologies gain further traction, teams thrive when they can easily adjust their resources based on real-time needs without the overhead of long-term software commitments. With subscription models, businesses can acquire additional licenses as necessary and reduce or cancel when fewer resources are required. They can also experiment with different tools in a low-risk environment, continually adjusting their technology stack as their needs evolve.

## Future of Development Using IDE Subscriptions

The future of software development will likely hinge on the further integration of AI, machine learning, and adaptive programming tools into IDE subscriptions. As these technologies mature, they are expected to enhance developer productivity significantly by automating routine tasks, suggesting code improvements, and even predicting potential issues before they arise. This evolution translates to heightened efficiency, as developers can focus their efforts on problem-solving and creative pursuits rather than dealing with mundane or repetitive tasks. As we head into an era focused on intelligence-driven development, embracing IDE subscriptions will be essential for staying competitive in the dynamic tech landscape.



## Conclusion: The Strategic Leveraging of IDE Subscriptions

IDE subscriptions represent a pivotal shift in how developers access and utilize essential development tools. By analyzing through the lenses of various intersecting perspectives—economic, technological, social, legal, and environmental—it is clear that IDE subscriptions enhance efficiency, promote collaboration, and facilitate innovation within software development. While there are challenges associated with oversight of cumulative costs and equitable access to these tools, the overall advantages typically outweigh these concerns. Organizations should harness IDE subscriptions to drive productive and high-quality development, ensuring they remain agile and up-to-date amidst the challenges of the industry.

Ultimately, engaging in IDE subscriptions is a forward-thinking decision that positions developers and organizations alike for ongoing success in the ever-evolving tech landscape. By investing in these tools, businesses equip their teams to tackle today's challenges head-on while paving the way for future innovations. Continuous adaptation and growth are essential, and embracing IDE subscriptions represents a strategic move towards realizing these goals.

### Explore Premium IDE Subscription Options with Us

If you're eager to leverage the exceptional capabilities of advanced IDE subscriptions like JetBrains or Visual Studio, our expert-curated offerings are designed to revolutionize your development processes. Our all-inclusive package is available for just **\*\*\$850\*\***, equipping your team with state-of-the-art tools to excel in software development. Please proceed to our [Checkout Gateway](#) and use our secure Payment Processor to settle the



indicated amount of **\*\*\$850\*\***. Once your payment is confirmed, do not hesitate to contact us via email, phone, or our website with your payment receipt for the arrangement of your IDE Subscription Service. Thank you for choosing us as your partner in development excellence!

© [2025+ b2b.rw](https://www.b2b.rw). All rights reserved.

