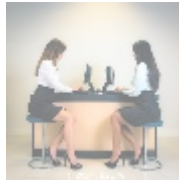


## Payment Gateway Migration Services: Elevating E-Commerce Efficiency

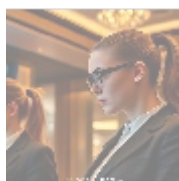


### Understanding Payment Gateway Migration

Payment Gateway Migration refers to the comprehensive process of transitioning from an existing payment processing system to a new platform in this case, moving to Authorize.Net. As the digital economy rapidly evolves, businesses are faced with the growing necessity for efficient, secure, and adaptable payment solutions. This transition is vital for handling transactions smoothly while meeting the ever-changing demands of consumers and commerce in a fast-paced digital landscape.

Ultimately, choosing the right payment gateway can significantly influence an organization's operational efficiency and customer satisfaction. A well-executed migration can lead to fewer transaction interruptions, accelerated transaction speeds, and a suite of enhanced security features. With Authorize.Net, businesses gain access to advanced functionalities, such as robust fraud protection tools, diverse payment options including credit cards, electronic checks, and digital wallets and comprehensive reporting capabilities that can refine analytics for business decision-making.

Moreover, the migration process itself is critical and requires meticulous planning, coordination among teams, and technical execution. This involves mapping existing processes, educating staff on the new systems, and effectively communicating changes and expectations to consumers. By emphasizing the importance of migration services, businesses can better protect their transaction integrity, strengthen customer trust, and foster operational resilience with minimal disruption. This strategic foresight also significantly aids in securing long-term customer relationships and ensuring compliance with regulatory mandates.

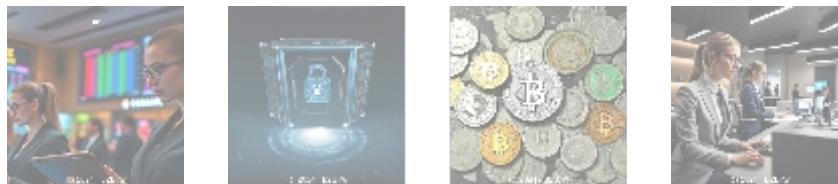


### Economic, Political, and Social Implications of Payment Gateway Migration

From an economic standpoint, migrating to Authorize.Net can lead to substantial cost savings. Traditional payment gateways often impose high transaction fees or have hidden costs associated with payment processing expenses that can accumulate significantly over time and negatively impact overall profit margins. By switching to Authorize.Net, businesses can benefit from reduced transaction costs, potential integration discounts, and an overall simplification of their billing processes. These savings can subsequently be redirected toward innovation, customer engagement initiatives, or enhancing product offerings.

Legally, the environment in which payment gateways operate has become increasingly stringent due to the rise of digital transactions and data-sensitive regulations. Compliance with standards such as PCI DSS (Payment Card Industry Data Security Standard) is no longer optional; it has become essential for protecting sensitive customer information. Migrating to Authorize.Net ensures that businesses operate within these regulatory frameworks, thereby avoiding costly penalties and reputational risks that can arise from compliance violations. This proactive stance reinforces the organization's commitment to data security in the eyes of customers and stakeholders alike.

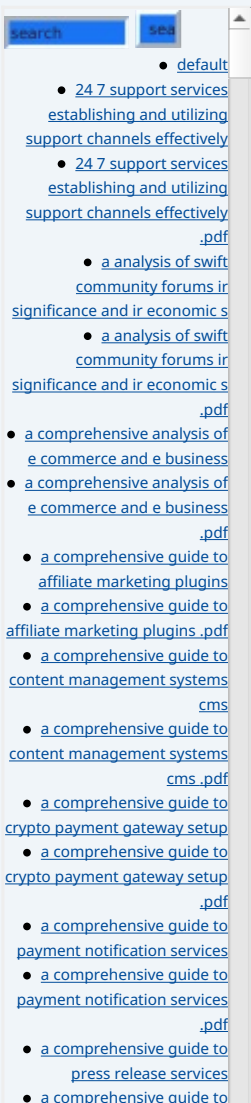
Socially, customer expectations are ever-evolving; today's consumers demand quick, secure, and transparent payment solutions as part of their overall shopping experience. If customers encounter delayed payment processes or transaction failures, their loyalty wanes quickly, threatening revenue potential. Transitioning to a superior payment gateway like Authorize.Net enhances customer experiences by providing faster transaction processing, multiple payment options, and clear communication throughout the payment process. Furthermore, the integration of advanced analytics tools empowers businesses to monitor consumer behavior, personalize marketing efforts, and engage customers more effectively.



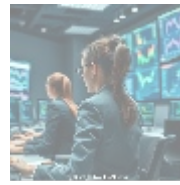
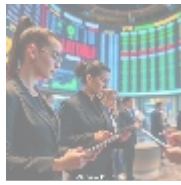
## Technological and Environmental Considerations

The technological infrastructure required for effective Payment Gateway Migration cannot be understated. It is critical for businesses to ensure compatibility between their existing systems and the new payment gateway. Authorize.Net's API has been designed for seamless integration with a variety of popular e-commerce platforms, significantly reducing the risk of downtime and enhancing user experience during the transition. Efficiently executed integration allows businesses to continue operations in a streamlined manner, ensuring that they minimize any potential disruptions in service.

From an environmental perspective, businesses are increasingly recognizing the importance of sustainability in today's market. Adopting digital payment solutions inherently reduces reliance on paper-based payment methods, which lowers operational carbon footprints and increases process efficiency. Additionally, by transitioning to a modern, digital-centric payment solution like Authorize.Net, companies can positively contribute to environmental sustainability goals. Authorize.Net also strives to continually enhance its operational practices, including evaluations of data centers to improve energy efficiency and decrease emissions, echoing a commitment to corporate responsibility and sustainable business practices.



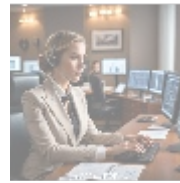
- [press release services .pdf](#)
- [a comprehensive guide to volunteer management tools](#)
- [a comprehensive guide to volunteer management tools .pdf](#)
- [a comprehensive study of e-commerce and e business](#)
- [a comprehensive study of e-commerce and e business .pdf](#)
- [access management tools essential insights for secure content management](#)
- [access management tools essential insights for secure content management .pdf](#)
- [accessibility improvement tools for cms powered sites](#)
- [accessibility improvement tools for cms powered sites .pdf](#)
- [account setup services for 2checkout enhance your e-commerce experience](#)
- [account setup services for 2checkout enhance your e-commerce experience .pdf](#)
- [advantage of best cloud accounting for ecommerce](#)
- [advantage of best cloud accounting for ecommerce .pdf](#)
- [advertising for payment acceptance](#)
- [advertising for payment acceptance .pdf](#)
- [advisory services for mergers and acquisitions](#)
- [advisory services for mergers and acquisitions .pdf](#)
- [adyen for marketplaces setup](#)
- [adyen for marketplaces setup .pdf](#)
- [adyen payment integration services](#)
- [adyen payment integration services .pdf](#)
- [adyen the future of payment processing](#)
- [adyen the future of payment processing .pdf](#)
- [affiliate marketing setup for klarna](#)
- [affiliate marketing setup for klarna .pdf](#)



## The Legal Landscape and Historical Context

The legal landscape governing payment processing is crucial for businesses in an increasingly digital world. Migrating to Authorize.Net ensures that companies align with a comprehensive compliance framework that adheres to both national and international regulations regarding data security. This strategic alignment not only protects sensitive consumer data but also establishes an organization as a trustworthy partner in the eyes of customers, thereby fostering long-lasting relationships.

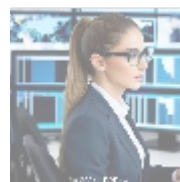
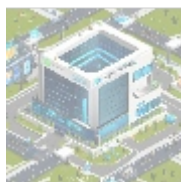
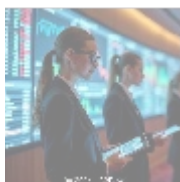
Historically, the migration landscape has evolved from cumbersome manual processes that included long and often obstructive procedures to more refined and automated systems. In earlier days, businesses faced significant barriers to entry, including convoluted technology integrations and a host of regulatory hurdles that could impede progress. However, advances in technology and workflow design have significantly streamlined the migration process, making it more efficient and user-friendly. This modern approach enhances user experiences, facilitates operational excellence, and positions businesses for competitive advantage in the market.



## A Psychological and Educational Perspective

From a psychological standpoint, modern consumers exhibit decreasing tolerance for friction during their purchasing experiences. Research shows that when customers experience overly complicated or prolonged payment processes, they are more likely to abandon their carts, leading to lost sales opportunities. A smooth, efficient payment experience bolstered by a comprehensive migration to Authorize.Net is vital for ensuring customer satisfaction and promoting retention. By keenly addressing these psychological factors, businesses can develop tailored payment processes that resonate with user expectations and enhance overall consumer satisfaction.

Furthermore, the educational component of the migration process is essential for teams involved. Comprehensive training initiatives should be established to familiarize employees with Authorize.Net's functionalities. This training will equip staff members to handle customer inquiries effectively and streamline operations as the business adapts to the new system. A knowledgeable workforce can significantly enhance the customer experience during this transition period and minimize operational challenges.



- [Legal Terms](#)
- [Main Site](#)

- Why buying here:

1. Outstanding Pros ready to help.
2. Pay Crypto for Fiat-only Brands.
3. Access Top Tools avoiding Sanctions.
4. You can buy in total privacy
5. We manage all legalities for you.

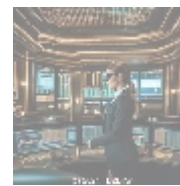
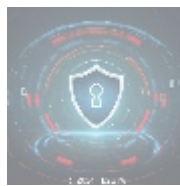
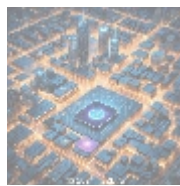
# Addressing Core Challenges and Solutions during Migration

## Identifying Challenges

As with any significant migration, businesses often encounter various challenges along the way. Potential issues include data loss, the risk of service downtime, inadequate staff training, and the complexities of integrating new technologies into existing infrastructures. Conducting a thorough assessment of current payment processes before migration can help identify these challenges early and create a strategic plan for addressing them.

## Strategic Solutions

1. **Pre-Migration Assessment:** Conduct a comprehensive evaluation of existing payment systems to identify pain points, gather user feedback, and outline necessary improvements.
2. **Robust Data Backups:** Implement a secure backup strategy for all transaction data before commencing any migration activities to diminish the risk of data loss and ensure business continuity.
3. **Employee Training Programs:** Establish targeted training workshops to help employees master Authorize.Net features, ensuring that they have hands-on knowledge of the new system before, during, and after the migration process.
4. **Transparent Customer Communication:** Proactively inform customers in advance about the migration process, detailing enhancements, the new technology, and reassurances regarding the continued security of their transactions. This communication fosters trust and loyalty.
5. **Gradual Implementation:** Wherever feasible, implement the new systems incrementally rather than all at once. This approach allows businesses to reduce disruption, collect real-time feedback, and adjust operations based on early user experiences.



## Conclusion: A Seamless Transition to Enhanced Payment Processing

In conclusion, migrating to Authorize.Net is not merely a tactical method for upgrading payment systems; rather, it is a strategic imperative for e-commerce businesses wishing to thrive in an increasingly competitive and fast-paced digital environment. The multitude of benefits including cost savings, streamlined operations, enhanced customer experiences, and compliance with regulatory standards demonstrates how critical these migration services are for sustainable growth and operational resilience.

Our specialized Payment Gateway Migration Services are expertly designed to facilitate this transition for organizations, ensuring a smooth transfer of operations to Authorize.Net while protecting transaction integrity and maintaining customer trust. We recognize the complexities involved in payment processing, and were committed to supporting businesses every step of the way, transforming

this pivotal moment into an opportunity for wider reach, increased engagement, and amplified sales through the effective management of payment solutions.

### Unlock the Benefits of Migration Services Today!

If you're intrigued and want to learn more about how our services can elevate your e-commerce experience, do not hesitate to reach out! Please contact us at [www.b2b.rw](http://www.b2b.rw) via email, phone, or our online form. If you're ready to benefit from our **Payment Gateway Migration Service**, available for **\$1,500**, we invite you to proceed to our [Checkout Gateway](#). Use our Payment Processor to pay the total amount of **\$1,500** in favor of our Company. Simply follow the provided instructions for payment processing. Once your payment is confirmed, reach out to us via email, phone, or the website, providing your payment receipt and details so we can arrange your Payment Gateway Migration Service. Thank you for your interest, and we look forward to enabling your continued success!

© 2025+ [b2b.rw](http://b2b.rw). All rights reserved.

