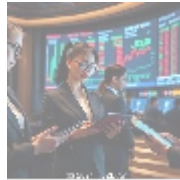




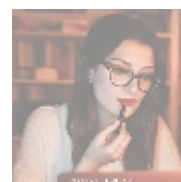
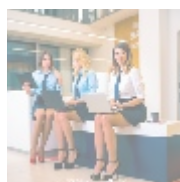
The Evolution and Impact of E-learning in CMS



Understanding E-learning in the Context of CMS

E-learning has transformed education by leveraging technology to create engaging, personalized, and interactive learning experiences that extend far beyond the constraints of traditional classrooms. Rather than relying solely on face-to-face instruction, e-learning opens up a vast array of resources and learning opportunities that are accessible anytime and anywhere, allowing learners to engage with content at their own pace.

Content Management Systems (CMS) serve as the backbone of this e-learning revolution by enabling educators, institutions, and organizations to create, manage, and deliver digital educational content effectively. As we delve deeper into how e-learning and CMS interact, we will examine their benefits, challenges, and nuances through various lenses including economic, social, technological, and legal perspectives. Understanding this relationship is vital as it lays the groundwork for enhancing user experiences and improving educational outcomes.



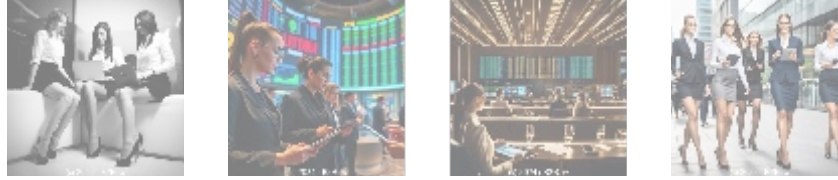
The Economic Impact of E-learning and CMS

The economic implications of adopting e-learning solutions through CMS are substantial. Organizations can experience drastic reductions in costs traditionally associated with physical training, including venue rentals, printed materials, travel, hotel stays, and instructor fees. For example, a typical on-site corporate training program can cost thousands of dollars per employee; by switching to a robust e-learning solution, organizations can save these costs significantly while extending quality training to more employees.

Moreover, e-learning platforms often come with built-in resources that promote collaborative training initiatives. These can include discussion forums, webinars, and online workshops that encourage peer interaction and knowledge sharing, allowing organizations to maximize their training investments. Furthermore, the global reach of e-learning means that companies can train remote teams without

incurring the additional travel costs associated with in-person training, thus optimizing their expenditure.

According to recent industry reports, the global e-learning market is projected to surpass \$375 billion by 2026, an explosive growth that reflects not only the increasing demand for these platforms but also their incredible potential to enhance skills development in rapidly evolving job markets. Organizations investing in learning management systems (LMS) can expect to see a higher ROI as they improve competencies, reduce onboarding time for new hires, and enhance employee satisfaction through continuous development opportunities.



Political and Legal Considerations

In an age where technology-driven education is becoming a governmental priority, various political frameworks around the globe champion the integration of e-learning tools into traditional education systems. Governments are increasingly recognizing the need for comprehensive digital learning strategies that encompass K-12 education, higher education, and workforce training. For instance, policy initiatives in several countries are aimed at elevating educational quality, reducing barriers to access, and promoting lifelong learning, all of which can be effectively achieved through robust e-learning frameworks.

However, with the rapid advance of e-learning, legal considerations surrounding accessibility and equity are paramount. Institutions deploying e-learning must comply with regulations like the Americans with Disabilities Act (ADA) in the U.S., which require accessible online content. Failure to adhere to these laws can not only diminish the quality of the learning experience for students with disabilities but can also result in significant legal repercussions for organizations.

Additionally, as more content moves online, issues surrounding intellectual property rights and data security must be prioritized. Organizations must ensure they possess the relevant permissions to use educational materials and that they safeguard the privacy of user data, addressing the growing public concern regarding data breaches and infringement of digital rights.



The Social Perspective on E-learning

Socially, e-learning facilitated by CMS has revolutionized the landscape of education, promoting inclusivity and adaptability. By providing high-quality educational resources to a broader audience, these platforms help dismantle barriers that have historically inhibited learning. For instance, individuals in remote areas can access training programs that were once limited to urban centers, allowing equal opportunities for professional growth.

Moreover, e-learning fosters a sense of community among learners, as online platforms often incorporate features such as social networking, discussion forums, and collaborative projects. This connectivity allows students to engage with peers,

- default
- [24 7 support services establishing and utilizing support channels effectively](#)
- [24 7 support services establishing and utilizing support channels effectively .pdf](#)
- [a analysis of swift community forums ir significance and ir economic s](#)
- [a analysis of swift community forums ir significance and ir economic s .pdf](#)
- [a comprehensive analysis of e commerce and e business](#)
- [a comprehensive analysis of e commerce and e business .pdf](#)
- [a comprehensive guide to affiliate marketing plugins](#)
- [a comprehensive guide to affiliate marketing plugins .pdf](#)
- [a comprehensive guide to content management systems cms](#)
- [a comprehensive guide to content management systems cms .pdf](#)
- [a comprehensive guide to crypto payment gateway setup](#)
- [a comprehensive guide to crypto payment gateway setup .pdf](#)
- [a comprehensive guide to](#)

exchange ideas, and participate in knowledge-sharing activities, enhancing the learning experience by embracing diverse perspectives. In essence, the ability to learn from people across different geographic locations enriches the educational process and builds essential soft skills such as communication and teamwork.

Furthermore, organizations that prioritize a culture of continuous learning through e-learning demonstrate their commitment to employee development, resulting in higher retention rates and job satisfaction. A workforce empowered by learning tools is better equipped to tackle the challenges of an ever-changing job market, creating an adaptable and resilient organization.

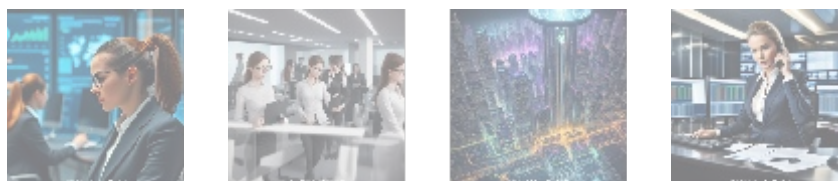


Environmental and Ethical Considerations

On an environmental scale, e-learning significantly contributes to reducing the carbon footprint associated with traditional educational methodologies. By minimizing the need for physical materials, commuting, and extensive logistics, e-learning provides a more sustainable and eco-friendly path to education. For example, companies that transition from in-person to online training are not only investing in their human capital but are also making strides toward corporate social responsibility by choosing greener practices.

Ethically, the responsibility of creating honest, diverse, and respectful educational content is paramount for organizations utilizing CMS. Content creators must ensure that resources are factual, relevant, and sensitive to cultural nuances. Furthermore, providing training on ethical issues in education to instructors and content developers can foster critical conversations around biases, promoting social equity and respect for all learners.

Organizations should also consider the impact of their learning materials on various demographics. The integration of diverse perspectives in course designs not only creates a more holistic educational experience but also acknowledges and respects the identities of all learners. In doing so, organizations promote an ethical standard of inclusivity within their educational frameworks.



Technological Innovations in E-learning

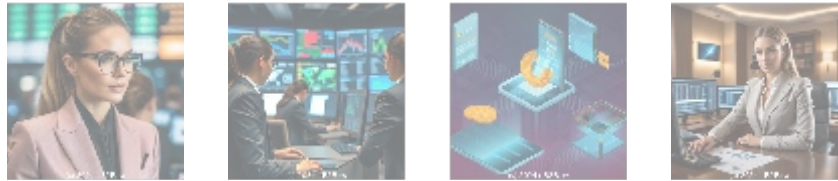
As technology continues to advance, e-learning is experiencing remarkable innovations that enhance the educational landscape. Emerging tools such as Artificial Intelligence (AI), Virtual Reality (VR), and Augmented Reality (AR) are contributing to a more immersive and interactive learning environment. For example, AI can analyze user behavior and preferences to customize learning paths that best suit individual requirements, ensuring that learners receive targeted content that enhances their educational experience.

Furthermore, VR and AR technology can facilitate simulated training environments where learners can practice skills in safe, controlled settings. Medical students can perform virtual surgeries, while engineering students can conduct experiments

- [payment notification services](#)
- [a comprehensive guide to payment notification services .pdf](#)
- [a comprehensive guide to press release services](#)
- [a comprehensive guide to press release services .pdf](#)
- [a comprehensive guide to volunteer management tools](#)
- [a comprehensive guide to volunteer management tools .pdf](#)
- [a comprehensive study of e-commerce and e business](#)
- [a comprehensive study of e-commerce and e business .pdf](#)
- [access management tools essential insights for secure content management](#)
- [access management tools essential insights for secure content management .pdf](#)
- [accessibility improvement tools for cms powered sites](#)
- [accessibility improvement tools for cms powered sites .pdf](#)
- [account setup services for 2checkout enhance your e-commerce experience](#)
- [account setup services for 2checkout enhance your e-commerce experience .pdf](#)
- [advantage of best cloud accounting for ecommerce](#)
- [advantage of best cloud accounting for ecommerce .pdf](#)
- [advertising for payment acceptance](#)
- [advertising for payment acceptance .pdf](#)
- [advisory services for mergers and acquisitions](#)
- [advisory services for mergers and acquisitions .pdf](#)
- [adyen for marketplaces setup](#)
- [adyen for marketplaces setup .pdf](#)
- [adyen payment integration services](#)
- [adyen payment integration services .pdf](#)
- [adyen the future of payment processing](#)
- [adyen the future of payment processing .pdf](#)
- [affiliate marketing setup for klarna](#)
- [affiliate marketing setup for klarna .pdf](#)
- [affiliate program payment solutions](#)
- [affiliate program payment solutions .pdf](#)
- [ai driven real time fraud detection in e-commerce](#)

virtually, promoting engagement and real-world applicability without the associated risks. The experiential learning opportunity provided by these technologies represents a significant advancement over traditional methods.

CMS platforms today also boast advanced analytics capabilities, allowing educators and administrators to measure engagement, completion rates, and learner progress in real-time. With data-driven insights, organizations can adapt their curriculum to meet learner needs effectively, leading to improved educational outcomes and higher retention rates. Such technological enhancements not only fulfill the needs of modern learners but also ensure that education keeps pace with industry demands.



Core Topic: The Role of CMS in E-learning

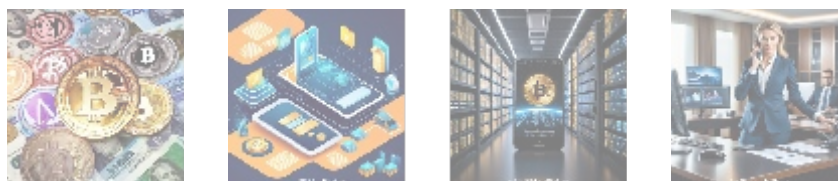
Defining the Value of CMS in Education

A well-implemented CMS serves as the central hub for all e-learning activities, empowering educators and institutions to deliver seamless educational experiences. These platforms enable users to create, manage, and distribute educational content effectively, ensuring a cohesive experience. By utilizing rich media, interactive elements, and well-organized course material, CMS enhances engagement among learners.

The challenge of personalization is effectively addressed through sophisticated CMS capabilities. By utilizing advanced data analytics and machine learning, these systems can create unique learning pathways for each user, adapting content based on performance metrics. This tailored approach has been shown to lead to greater engagement and satisfaction among learners. Consider the following benefits of a personalized learning experience:

- Increased student motivation resulting from content relevance to individual skills and interests.
- Enhanced knowledge retention through structured learning that reinforces concepts over time.
- Efficiency in training programs, as organizations can quickly respond to changes in employee needs.
- The ability to track progress and provide timely feedback encourages continuous improvement.

By prioritizing personalization, organizations can ensure that employees are equipped with the knowledge and skills necessary to succeed in a constantly evolving workforce, leading to long-term growth for both individuals and organizations alike.



Conclusion: The Future of E-learning and CMS Integration

• [Legal Terms](#)

• [Main Site](#)

• Why buying here:

1. Outstanding Pros ready to help.
2. Pay Crypto for Fiat-only Brands.
3. Access Top Tools avoiding Sanctions.
4. You can buy in total privacy
5. We manage all legalities for you.

The trajectory of education is undoubtedly tied to the evolving landscape of e-learning, and as technology continues to advance, the need for effective CMS becomes increasingly vital. With learners expecting flexible and tailored educational experiences, organizations must adapt to meet these new demands. Investing in a robust CMS not only enhances operational efficiency but also positions businesses as leaders in employee development and training.

The future holds immense potential for e-learning and CMS integration, where emerging technologies will continue to redefine how knowledge is shared, learned, and applied. As organizations implement innovative solutions, they create opportunities for learners to engage with content in meaningful ways that promote skill development and professional growth. The integration of e-learning opens pathways for learning that are inclusive, engaging, and ultimately transformative.

Ultimately, committing to e-learning through effective CMS is not just about keeping pace with industry changes; it's about empowering learners to thrive in their careers, fostering a culture of lifelong learning, and ensuring that organizations remain competitive in the global marketplace.

Unlock Your Learning Potential with Our CMS Solutions

If you're interested in enhancing your organizations learning and training framework through our specialized CMS solutions, the price for our comprehensive e-learning package starts at \$950. Please proceed to our [Checkout Gateway](#) to secure your purchase. After completing your payment, please reach out via email or phone with your payment confirmation for the activation of your CMS e-learning service. Thank you for considering us, and we look forward to supporting your educational endeavors!

© [2025+b2b.rw](https://www.b2b2b.rw) . All rights reserved.

